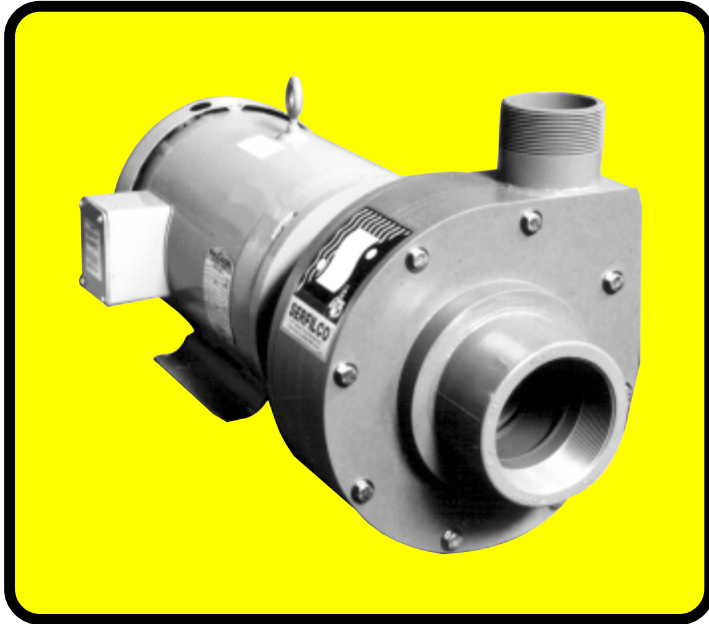


SERIES 'H' HORIZONTAL PUMPS

HEAVY-DUTY CONSTRUCTION FOR: WASTE TREATMENT / PLATING / ACIDS SCRUBBING / ETCHING / PETROCHEMICAL



- **High flow rates**
Over 1200 U.S. GPM, or 149 ft. TDH @ 60 Hz
(3800 l/min or 31.5m @ 50 Hz)
- **Excellent chemical resistance**
Machined from solid CPVC
(See a chemical resistance chart)
- **Single or double mechanical seal**
Silicon carbide
EPDM or Viton® elastomers
- **Quiet, vibration free**
Centrifugal, high efficiency enclosed impeller
- **Flanged or NPT ports:**
- **Long or close-coupled**
Back pull-out design. Optional long-coupled kit available
- **Standard chemical duty motors (3 - 30 HP)**
Sealed oversized bearings, cast iron end bells, shaft slinger washer, corrosion resistant two-part epoxy finish, stainless steel nameplate.

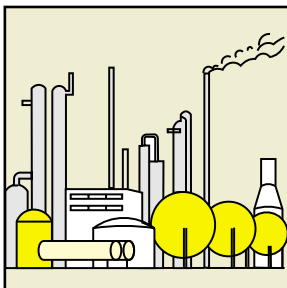
The Series 'H' pump is a heavy-duty centrifugal pump machined from solid CPVC. It provides a high level of resistance to aggressive chemicals. An external mechanical seal and sleeved shaft* provide excellent corrosion resistance. The new Series 'H' 6" x 4" pump features a titanium or Hastelloy® C shaft.

The Series 'H' pump serves as an economical alternative to ANSI style process pumps. The high flow rates, chemical resistance and durability of this pump make it the perfect workhorse for waste treatment,

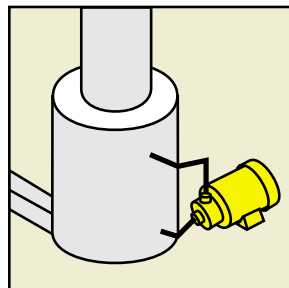
chemical processing, transfer and filter pumping. Pumps are available for long-coupling in the field to user supplied standard motors.

Double seals are available and recommended for flushing the seal faces when abrasives are present or positive product containment is required. Optional coupling arrangements, mechanical seals, fittings and flange connections ensure adaptability to custom applications.

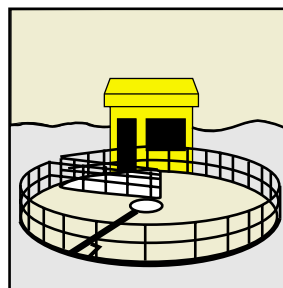
* Sleeved shaft not available on 6" x 4" pump.



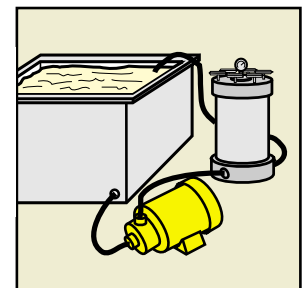
PETROCHEMICAL



FUME SCRUBBING



WASTE TREATMENT



FILTER SYSTEM

SERIES 'H' PUMPS Dimensions

Pumps are machined from solid CPVC, with CPVC sleeved shaft ¹. Elastomers are Viton® or EPDM. All models have enclosed impeller. Type 21 mechanical seal with silicon carbide faces is externally mounted with stainless steel components not in solution contact. Double mechanical seal is recommended for solutions containing abrasives, high temperatures or other critical service applications. Motor is painted with two-part epoxy paint. Pump Model No. indicates suction (FNPT) x discharge (MNPT) x impeller diameter (measurements in inches).

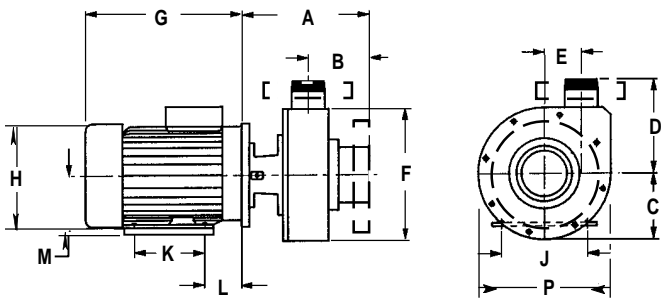
All pumps are wet tested for flow and pressure certification.

¹ 6" x 4" pumps not available with sleeved shafts. These pumps feature standard titanium or optional Hastelloy C shafts. These pumps also include ANSI 150 lb. flange connections, suction and discharge. They are mounted on 36" x 15" steel bases.

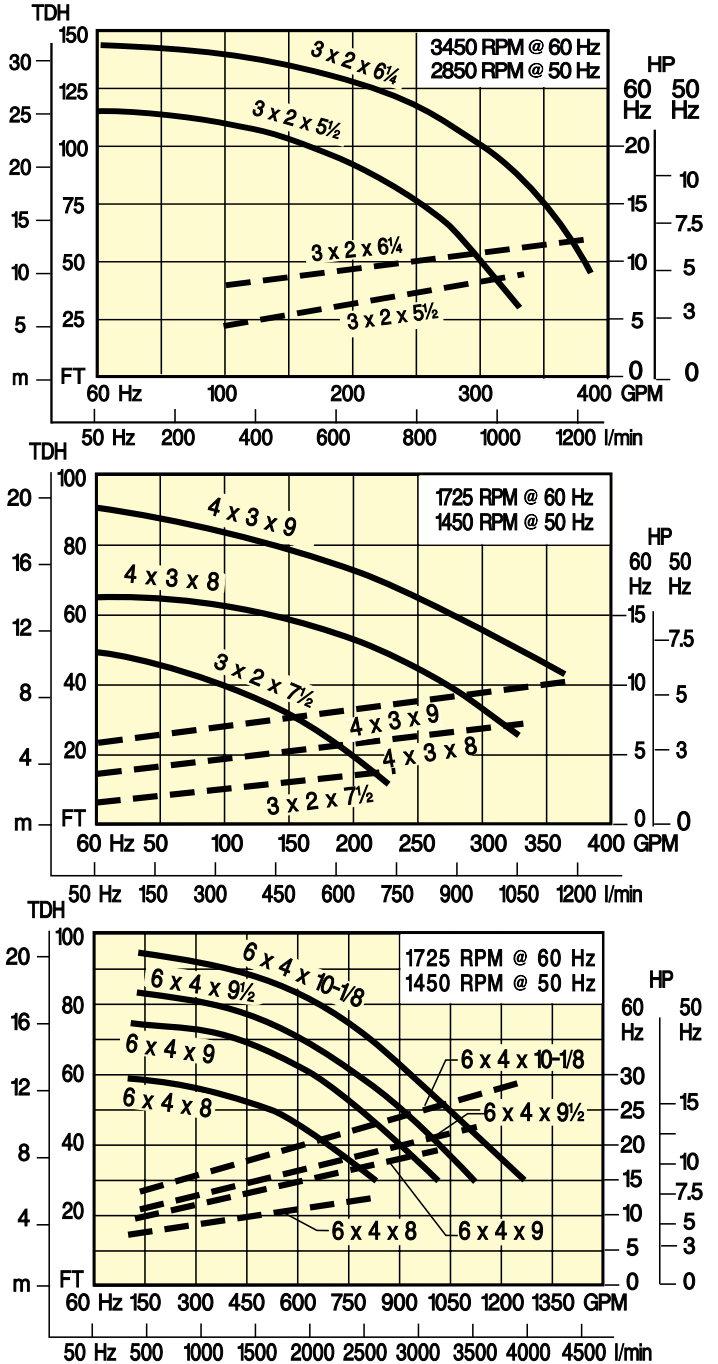
Determine the size of the Series 'H' pump required by using the flow curves to the right and the dimensional information on this page. Select the various elements necessary to order the proper pump from the tables on the next page. Note that the performance curves reflect pump operations at either 1750 RPM or 3450 RPM @ 60 Hz (1450 RPM or 2850 RPM @ 50 Hz).

FLOW CURVES —————
MOTOR HP - - - - -

DIMENSIONS



NOTE: Flange connections are standard on 6" x 4" models.



| MODEL | MOTOR FRAME | HP | DIMENSIONS in. (mm) | | | | | | | | | | | | |
|--------------------|-------------|------------|---------------------|-----------|-----------|-----------|------------|------------|------------|------------|------------|-----------|------------|------------|-------------|
| | | | A | B | C | D | E | F | G | H | J | K | L | M | P |
| 3 x 2 x 5 1/2 | 213TC | 7.5 | 10.8 (274) | 4.6 (117) | 4.6 (117) | 7.6 (193) | 3.6 (91) | 12.0 (305) | 14.6 (371) | 10.3 (262) | 8.5 (216) | 5.5 (140) | 3.5 (89) | 5.3 (135) | 12 (305) |
| | 215TC | 10.0 | 10.8 (274) | 4.6 (117) | 4.6 (117) | 7.6 (193) | 3.6 (91) | 12.0 (305) | 14.6 (371) | 10.3 (262) | 8.5 (216) | 7.0 (178) | 3.5 (89) | 5.3 (135) | 12 (305) |
| 3 x 2 x 6 1/4 | 215TC | 10.0 | 10.8 (274) | 4.6 (117) | 4.6 (117) | 7.6 (193) | 3.6 (91) | 12.0 (305) | 14.6 (371) | 10.3 (262) | 8.5 (216) | 7.0 (178) | 3.5 (89) | 5.3 (135) | 12 (305) |
| | 15.0 | 10.8 (274) | 4.6 (117) | 4.6 (117) | 7.6 (193) | 3.6 (91) | 12.0 (305) | 14.6 (371) | 10.3 (262) | 8.5 (216) | 7.0 (178) | 3.5 (89) | 5.3 (135) | 12 (305) | |
| 3 x 2 x 7 1/2 | 182TC | 3.0 | 10.8 (274) | 4.6 (117) | 4.6 (117) | 7.6 (193) | 3.6 (91) | 12.0 (305) | 12.3 (312) | 8.7 (221) | 7.5 (191) | 4.5 (114) | 2.8 (71) | 4.5 (114) | 12 (305) |
| | 184TC | 5.0 | 10.8 (274) | 4.6 (117) | 4.6 (117) | 7.6 (193) | 3.6 (91) | 12.0 (305) | 14.0 (356) | 8.7 (221) | 7.5 (191) | 5.5 (140) | 2.8 (71) | 4.5 (114) | 12 (305) |
| 4 x 3 x 8 | 213TC | 7.5 | 12.4 (315) | 6.0 (152) | 6.0 (152) | 8.8 (224) | 3.2 (81) | 12.1 (307) | 14.6 (371) | 10.3 (262) | 8.5 (216) | 5.5 (140) | 3.5 (89) | 5.3 (135) | 12.13 (308) |
| | 215TC | 10.0 | 12.4 (315) | 6.0 (152) | 6.0 (152) | 8.8 (224) | 3.2 (81) | 12.1 (307) | 15.7 (399) | 10.3 (262) | 8.5 (216) | 7.0 (178) | 3.5 (89) | 5.3 (135) | 12.13 (308) |
| 4 x 3 x 9 | 215TC | 10.0 | 12.4 (315) | 6.0 (152) | 6.0 (152) | 9.3 (236) | 3.7 (94) | 13.1 (333) | 15.7 (399) | 10.3 (262) | 8.5 (216) | 7.0 (178) | 3.5 (89) | 5.3 (135) | 13.13 (334) |
| | 254TC | 15.0 | 12.4 (315) | 6.0 (152) | 6.0 (152) | 9.3 (236) | 3.7 (94) | 13.1 (333) | 19.2 (488) | 12.9 (328) | 10.0 (254) | 8.3 (211) | 4.3 (109) | 6.3 (160) | 13.13 (334) |
| 6 x 4 ² | 256TC | 20 | * | * | 8 (203) | 12 (305) | 5.2 (132) | 14.8 (376) | 19.2 (488) | 12.9 (328) | 10 (254) | 10 (254) | 4.3 (109) | 6.25 (159) | 15.13 (384) |
| | 284TC | 25 | 14.5 (368) | 6.8 (173) | 8 (203) | 12 (305) | 5.2 (132) | 14.8 (376) | 23.1 (587) | 14.6 (371) | 11 (279) | 9.5 (241) | 4.75 (121) | 7.0 (178) | 15.13 (384) |
| | 286TC | 30 | 14.5 (368) | 6.8 (173) | 8 (203) | 12 (305) | 5.2 (132) | 14.8 (376) | 23.1 (587) | 14.6 (371) | 11 (279) | 11 (279) | 4.75 (121) | 7.0 (178) | 15.13 (384) |

* Dimension to flange face on 6" x 4" pump

² Consult Sales Department

SERIES 'H' PUMPS Ordering information

TO ORDER, use Price Code Number

TABLE I

STANDARD MODELS

To order standard pump-motor combination, select model from Table I.

| MODEL (with CPVC sleeved shaft, Viton elastomers, single mechanical seal.) | MAXIMUM FLOW RATE | MAXIMUM TDH (Ft.) | PRICE CODE NO. 60 Hz |
|---|-------------------|-------------------|----------------------|
| 3 x 2 x 5½ CV(M8) -D10.0 | 325 | 120 | 47-1417 P |
| 3 x 2 x 6¼ CV(M8) -D15.0 | 380 | 149 | 47-1517 L |
| 3 x 2 x 7½ CV(M8) -H5.0 | 230 | 50 | 47-1617 F |
| 4 x 3 x 8 CV(M8) -H7.5 | 300 | 65 | 47-0417 G |
| 4 x 3 x 9 CV(M8) -H10.0 | 380 | 90 | 47-1717 H |
| 6 x 4F x 8 CTV(M8) -H15.0 | 800 | 60 | 47-3127 S |
| 6 x 4F x 9 CTV(M8) -H20.0* | 950 | 75 | 47-3227 V |
| 6 x 4F x 9½ CTV(M8) -H25.0* | 1100 | 84 | 47-3327 W |
| 6 x 4F x 10 CTV(M8) -H30.0* | 1250 | 95 | 47-3427 X |

TABLE II

OTHER MODELS

To determine pump model for a specified GPM, TDH, material and specific gravity, select performance point on curve. Determine required HP by moving vertically to corresponding number dotted line. Read the required HP at right ordinate and multiply by S.G. Select pump, "O"-ring and seal, and motor to complete Model Number. Add corresponding number designations together to create Price Code Number.

EXAMPLE:

"O"-RING & MECHANICAL SEAL + **PUMP** + **MOTOR** = **PRICE CODE NUMBER**
 V(M8) + 3 x 2 x 7½C + -H5.0 = 47-1617 F

PUMP "O"-RING & MECHANICAL SEAL (TYPE 21)

MOTOR, TEFC "C" FACE

| MODEL | PRICE CODE NO. | "O"-RING & MECHANICAL SEAL MATERIAL (SOLUTION CONTACT) | ADD TO . . . | | RPM | VOLTAGE | HP | ADD TO . . . | | PUMP-MOTOR SHIP. WT. |
|---------------|----------------|---|----------------|----------------|--------------------|---|---|--------------|----------------|----------------------|
| | | | MODEL NUMBER | PRICE CODE NO. | | | | MODEL NUMBER | PRICE CODE NO. | |
| 3 x 2 x 5½C | 47-141 | SINGLE MECHANICAL SEAL EPDM, silicon carbide Viton, silicon carbide | L(M8) V(M8) | 1 7 | 1450 or 1725 | 208-230-460/3/50-60 (190-380-415/3/50) | 3.0 5.0 7.5 10.0 15.0 20.0 25.0 30.0 | -H3.0 | K | 130 |
| 3 x 2 x 6¼C | 47-151 | | | | | | | -H5.0 | F | 155 |
| 3 x 2 x 7½C | 47-161 | | | | | | | -H7.5 | G | 190 |
| 4 x 3 x 8C | 47-041 | -H10.0 | H | 200 | | | | | | |
| 4 x 3 x 9C | 47-171 | -H15.0 | S | 300 | | | | | | |
| 6 x 4F x 8CT | 47-312 | -H20.0* | V | 400 | | | | | | |
| 6 x 4F x 9CT | 47-322 | -H25.0* | W | 480 | | | | | | |
| 6 x 4F x 9½CT | 47-332 | -H30.0* | X | 500 | | | | | | |
| 6 x 4F x 10CT | 47-342 | -D5.0 | J | 155 | | | | | | |
| | | -D7.5 | T | 175 | | | | | | |
| | | -D10.0 | P | 195 | | | | | | |
| | | -D15.0 | L | 210 | | | | | | |
| | | -D20.0* | M | 335 | | | | | | |

¹ DRI-STOP 2R is recommended when a double mechanical seal is used. DRI-STOP switch prevents damage to pump due to dry operation. See Pump Tips and Controls.

OPTIONS

| DESCRIPTION | PRICE CODE NO. | |
|---|----------------|---|
| Trimmed impeller to meet specified flow | 47-0084 | |
| Flange connections (ANSI 150 lbs) | For models | |
| | 3 x 2 | 47-0061 |
| | 4 x 3 | 47-0073 |
| Hastelloy C shaft | 6 x 4 | Change T to H in Model No. & change 5th digit from 2 to 3 in Price Code No. |

² Long Coupling Kit includes cast iron bearing pedestal frame, FRP channel, flexible coupling, guard. (Order pump separately)

| LONG COUPLING KITS ² | | |
|--|-----------------|----------------|
| FOR MODELS | FOR MOTOR FRAME | PRICE CODE NO. |
| 3 x 2 x 7½ 4 x 3 x 8 | 143/145T | 42-0500 |
| | 182/184T | 42-0501 |
| | 213/215T | 42-0502 |
| Motor mounting and alignment (For motors 10 H. P. and smaller) | | 42-0504 |

Specifications subject to change without notice.

* Consult Sales Department